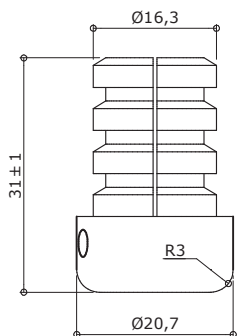
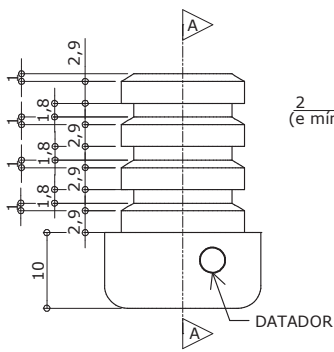


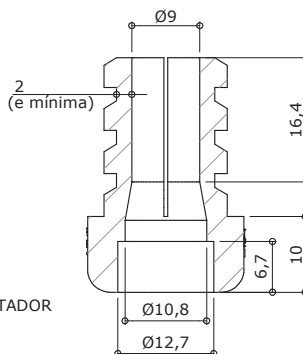
**DETALHE - SAPATA**



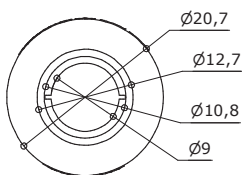
**VISTA 2**  
ESC. 1 : 1



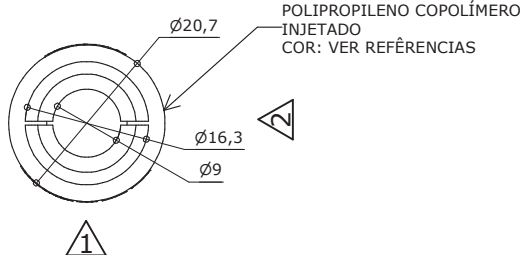
**VISTA 1**  
ESC. 1 : 1



**CORTE AA**  
ESC. 1 : 1



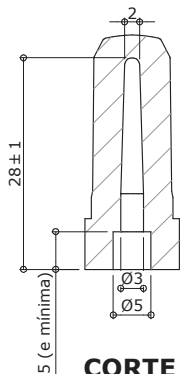
**VISTA INFERIOR**  
ESC. 1 : 1



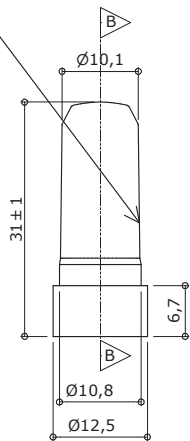
**VISTA SUPERIOR**  
ESC. 1 : 1

**SAPATA**

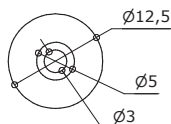
POLIPROPILENO COPOLÍMERO INJETADO  
COR: VER REFERÊNCIAS



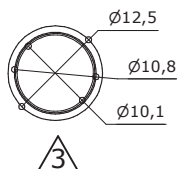
**CORTE BB**  
ESC. 1 : 1



**VISTA 3**  
ESC. 1 : 1



**VISTA INFERIOR**  
ESC. 1 : 1



**VISTA SUPERIOR**  
ESC. 1 : 1

**PINO EXPANSOR**

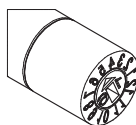
Apresentar em relevo no material injetado a seguinte informação:



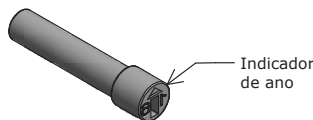
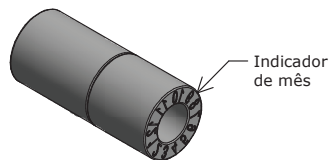
nome do fabricante do componente

**Identificação do Modelo**

Datador conforme figura abaixo:



5 ou 6mm



Datador duplo com miolo giratório  
D= 5 ou 6mm

**Sapata**

- Aplicação:
- CJA-01
  - CJA-03
  - CJA-04
  - CJA-05
  - CJA-06
  - CJC-01
  - CJP-01

Data 21/03/16

Página

**1/1**



**Atenção**

Preserve a escala  
Quando for imprimir, use folhas A4 e desabilite a função "Fit to paper"

Respeite o Meio Ambiente.  
Imprima somente o necessário

\* Projeto FDE com cessão de uso ao FNDE conforme Acordo de Cooperação Técnica (D.O.U. 25/03/2009)